

## **NOTICE OF MEETING**

### **EXECUTIVE COMMITTEE**

**January 9, 2019      3:00 P.M.**

Administration Building  
508 New York Ave  
Sheboygan WI 53081  
Room 306

### **AGENDA**

Call to Order

Certification of Compliance with Open Meeting Law

Public Input and Comments on Agenda Items/Non-Agenda Items

Consideration of Authorizing Sale of Lot 3 at Amsterdam Dunes per Resolution No. 14 (2015/2016)

Next Meeting Date: Thursday, January 31 at 3:00pm

Adjournment

Prepared by:  
Alayne Bosman  
Recording Secretary

Tom Wegner  
Committee Chairperson

NOTE: Members of the public are invited to offer comments on topics which may or may not appear on the Agenda, and Committee members may discuss such matters, but no action may be taken by the Committee on non-Agenda topics. Individual speakers may be limited to no more than five minutes.

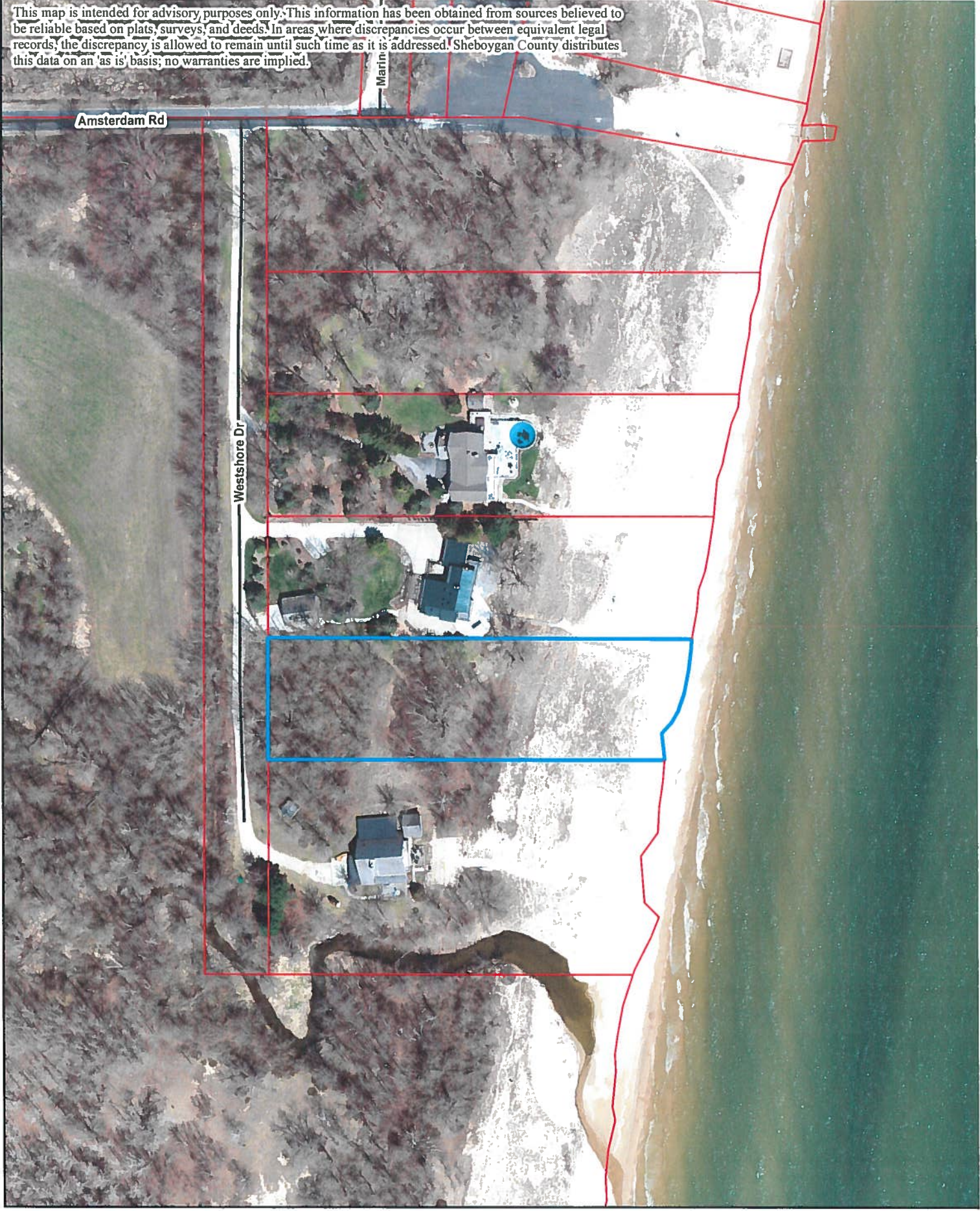
A majority of the members of the County Board of Supervisors or of any of its committees may be present at this meeting to listen, observe and participate. If a majority of any such body is present, their presence constitutes a "meeting" under the Open Meeting Law as interpreted in State ex rel. Badke v. Greendale Village Board, 173 Wis. 2d 553 (1993), even though the visiting body will take no action at this meeting.

If listed as an agenda item, the "Administrator's Report" is a summary of key activities for the previous month and planned for upcoming months including performance evaluations, liaison committee issues and County Board issues. No action will be taken by the Executive committee resulting from the report unless it is a specific item on the agenda.

Persons with disabilities needing assistance to attend or participate are asked to notify the County Board Chairman/County Administrator's Office at 920-459-3103 prior to the meeting so that accommodations may be arranged.

*Posted on 1/7/2019 at 9:30am*

This map is intended for advisory purposes only. This information has been obtained from sources believed to be reliable based on plats, surveys, and deeds. In areas where discrepancies occur between equivalent legal records, the discrepancy is allowed to remain until such time as it is addressed. Sheboygan County distributes this data on an 'as is' basis; no warranties are implied.



**Sheboygan  
County,  
Wisconsin**

1/2/2019

Source: Sheboygan County Planning & Conservation Department  
G:\Departments\Planning\Mapdocs\Public Project PDFs\\*File Name\*

**Lot 3**

0 62.5 125'

