

NOTICE OF MEETING

SHEBOYGAN COUNTY PLANNING, RESOURCES,
AGRICULTURE AND EXTENSION COMMITTEE

June 23, 2026

3:30 PM

UW Extension Office
UW Sheboygan Campus
5 University Drive
Sheboygan, WI
Room 5024

Remote Access:

(312) 626-6799

Meeting ID: 995 6557 9787

Passcode: 919025

<https://uwmadison.zoom.us/j/99565579787?pwd=1u8fomPuhXGf1KA8q9MBVYTvl6pb1U.1&from=addon>

*** AGENDA ***

Call Meeting to Order

Certification of Compliance with Open Meeting Law

Approval of May 26, 2026 Minutes

Correspondence

UW Extension-

Consideration of UW Extensions 2026 First Quarter Variance Report

Area Extension Director Report

Positive Youth Development Educator Report- Diana Hammer

Planning & Conservation –

Consideration of Utilizing Non-Lapsing Funds for Water Quality Projects

Consideration of 2026 Stewardship Applications

Consideration of Resolution Approving the 2026 Marsh Management Plan

Consideration of 5-Year Capital Plan Requests

Other Department Project and Program Management Updates- *This report is a summary of key activities in the Department. No action will be taken resulting from the report unless it is a specific item on the agenda.*

Consideration and Approval of Attendance at Other Meetings/Functions
Travel Report and Report of Meetings and Functions Attended by Committee Members
Review and Approve Vouchers

Adjournment

Next meeting is scheduled for July 28, 2026, at 3:30PM.

Prepared by:
Sharon Harvey, Recording Secretary
(920) 459-1370

Approved by:
Rebecca Clarke, Chairperson
(920) 395-6609

NOTE: The Committee welcomes all visitors to listen & observe, but only Committee members & those invited to speak will be permitted to do so, except for the Public Hearing portion of this meeting where any interested person can speak. Person with disabilities needing assistance to attend or participate should contact the County Planning & Conservation Department at 920/459-1370 prior to the meeting so that accommodations may be arranged.

NOTE: A majority of the members of the County Board of Supervisors or any of its committees may be present at this meeting to listen, observe and participate. If a majority of any such body is present, their presence constitutes a "meeting" under the Open Meeting Law as interpreted in *State ex rel. Badke v. Greendale Village Board*, Wis. 2d 553 (1993), even though the visiting body will take no action at this meeting.

**SHEBOYGAN COUNTY PLANNING, RESOURCES, AGRICULTURE & EXTENSION
COMMITTEE MINUTES**

Sheboygan County UW-Extension Office
5 University Drive
Sheboygan, WI
Room 5024
and
Remote

May 26, 2026

Called to Order: 3:30 PM

Adjourned: 5:15 PM

MEMBERS PRESENT: Chairperson Rebecca Clarke, Supervisor John Nelson,
Supervisor Joe Liebau Jr., Supervisor David Otte,
Supervisor Brian Smith(Remote)

MEMBERS ABSENT: Ag Community Member Travis Luedke

OTHERS PRESENT: Jayna Hintz, Emily Lamb, Sarah Feider, Aaron Brault, Tyler
Betry, Ellen Schleicher, Laura Grunwald, Michael
Miller(Remote), Anne Pfeiffer(Remote)

Chairperson Rebecca Clarke called the meeting to order at 3:30 PM and verified the meeting notice had been posted on May 22 at 2:00 PM and the meeting complied with the Wisconsin Open Meeting Law.

Chairperson Rebecca Clarke approved the March 24, 2026 minutes.

Correspondence: None.

Register of Deeds:

Consideration of 2025 Fourth Quarter Variance. Supervisor Nelson moved to approve the variance. Supervisor Liebau seconded the motion. Motion carried.

Discussion of property fraud led by Ellen Schleicher.

Planning & Conservation-

Consideration of Advisory Committee Assignments. Supervisor Nelson and Supervisor Liebau will be attending the advisory committee meetings to represent the Planning, Resources, Agriculture & Extension Committee.

Consideration of 2025 Fourth Quarter Variance. Supervisor Nelson moved to approve the variance. Supervisor Otte seconded the motion. Motion carried.

Consideration of 2026 First Quarter Variance. Supervisor Otte moved to approve the variance. Supervisor Liebau seconded the motion. Motion carried.

Consideration of Resolution Authorizing Land Swap for Shoreland 400 Rail Trail. Supervisor Nelson moved to approve the land swap. Supervisor Otte seconded the motion. Motion carried.

Consideration of Marsh Management Plan. Supervisor Liebau moved to approve the plan. Supervisor Nelson seconded the motion. Motion carried.

Consideration of Use of Non-Lapsing Funds. Supervisor Liebau moved to approve the funds for two locations. Supervisor Nelson seconded the motion. Motion carried.

Review of Department Vehicle Inventory let by Aaron Brault.

Extension-

Consideration of 2025 Fourth Quarter Variance. Supervisor Nelson moved to approve the variance. Supervisor Liebau seconded the motion. Motion carried.

Reviewed and Approved Vouchers.

Area Extension Director Report. Jayna Hintz and gave an update and answered questions on 2026 Community Needs Forum, shared the semi-annual educator reports, included in the agenda packets and found on the UW Extension Sheboygan website. As part of Hintz report, Anne Pfeiffer, Crops & Soil Associate Director, joined the meeting virtually to provide a report on the Regional Agriculture Crops Educator position survey she conducted. Pfeiffer conducted the survey to learn more about the needs related to an Agriculture Crops Educator. Pfeiffer learned the interest leaned towards research on the farms and connecting innovative farmers in Sheboygan with other innovative farmers across Wisconsin. The committee asked Anne questions and discussed the position and interest in moving forward with filling the Regional Agriculture Crops Educator position. The position will prioritize connecting innovative farmers and on the farm research. Hintz shared community support in moving forward with refilling the Human Development and Relationship Educator position.

Sarah Feider, 4-H Program Educator Report. Sarah Feider gave an update on programming she is working on.

Other Department Project and Program Management Updates

Consideration and Approval of Attendance at Other Meetings/Functions. Supervisor Nelson attending Dairy Calving Workshop on 5/28/26. Supervisor Otte attending the 2026 Community Needs Forum. Chairperson Clark attending Rocky Knoll on 5/27/26. Supervisor Liebau moved to approve the attendance. Supervisor Nelson seconded the motion. Motion carried.

Travel Report and Report of Meetings and Functions. None.

Supervisor Liebau moved to adjourn the meeting. Supervisor Nelson seconded the motion. Motion carried. Meeting adjourned at 5:15 PM.

Next meeting is scheduled for June 23, 2026, at 3:30 PM.

Emily Lamb
Recording Secretary

Joe Liebau Jr.
Committee Secretary

**VARIANCE REPORT FOR DEPARTMENT -- UW EXTENSION
FOR THE QUARTER ENDING 3/31/2026**

TIMING	G/L CATEGORY	VARIANCE FROM BUDGET	EXPLANATION OF VARIANCE
	Revenues		
	Public Charges for Services	(6,630.80)	Extension Programs, such as summer camp, and 4-H Member fees are in process and will continue to be invoiced and accepted.
	Expenses		
	Wages & Benefits	12,425.33	Extension has not filled the .6 Administrative Associate. Waiting to fill after the vacant educator roles are filled.
	Operating Expenses	6,587.37	Summer intern is budgeted throughout the year, seminar and training budgeted across the entire year, more of the seminar and training budget was used in the first quarter. Office supply budget will be used later in the year. Postage will be used throughout the year and invoice the state for postage at year end. James Leasing was put in the printing account and will be reclassified prior to the next variance report. Not as many expenses for programming supplies in first quarter, expenses for supplies tend to go up for summer and fall programming.
	Interdepartmental Charges	12,422.65	Charges were lower than anticipated.
	Variances Less Than Justification Threshold	(309.76)	
	TOTAL	24,494.79 Positive	

YTD Available Budget Report



Account Number	Account Desc	Original Budget	Transfers	Revised Budget	YTD Actuals	Encumbrances	Available Budget	% Used
194 UW-Extension		(1,141.00)	0.00	(1,141.00)	(25,635.79)	0.00	24,494.79	2246.80 %
41 Taxes		(101,154.00)	0.00	(101,154.00)	(101,154.00)	0.00	0.00	100.00 %
		(101,154.00)	0.00	(101,154.00)	(101,154.00)	0.00	0.00	100.00 %
42 InterGovtl Revenues		0.00	0.00	0.00	0.00	0.00	0.00	0.00 %
		0.00	0.00	0.00	0.00	0.00	0.00	0.00 %
45 Public Chgs Service		(8,538.00)	0.00	(8,538.00)	(1,907.20)	0.00	(6,630.80)	22.34 %
		(8,538.00)	0.00	(8,538.00)	(1,907.20)	0.00	(6,630.80)	22.34 %
46 Interest-Other Inc		(3,822.00)	0.00	(3,822.00)	(3,512.24)	0.00	(309.76)	91.89 %
		(3,822.00)	0.00	(3,822.00)	(3,512.24)	0.00	(309.76)	91.89 %
51 Personnel Reltd Exp		23,532.00	0.00	23,532.00	11,106.67	0.00	12,425.33	47.20 %
		23,532.00	0.00	23,532.00	11,106.67	0.00	12,425.33	47.20 %
53 Operating Expenditur		69,955.00	0.00	69,955.00	63,367.63	0.00	6,587.37	90.58 %
		69,955.00	0.00	69,955.00	63,367.63	0.00	6,587.37	90.58 %
55 InterDptl Charges		18,886.00	0.00	18,886.00	6,463.35	0.00	12,422.65	34.22 %
		18,886.00	0.00	18,886.00	6,463.35	0.00	12,422.65	34.22 %
47 Interdeptl Revenue		0.00	0.00	0.00	0.00	0.00	0.00	0.00 %
		0.00	0.00	0.00	0.00	0.00	0.00	0.00 %
Grand Total:		(1,141.00)	0.00	(1,141.00)	(25,635.79)	0.00	24,494.79	2246.80 %



Agriculture



If it happens on a farm or in a field, the Extension Institute of Agriculture works with you to achieve better results. Our innovative dairy management programs range from genetics to farm and business management. Extension researchers work hand-in-hand with row crop, forage and fresh produce growers to provide best practices for every aspect of the growing phase. We also advise communities on using sustainable practices to create inviting spaces free from invasive species.

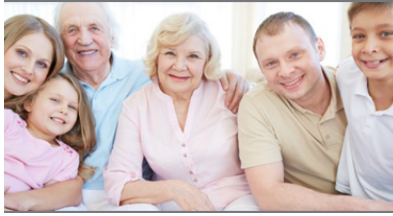
Dairy | *Manuel Peña, Regional Dairy Educator*

A train the trainer safety toolbox program for farm operations, safety consultants, educators, and instructors where they find materials to lead or support agricultural safety training by following an interactive guide and adult-learning principles to encourage participation, ownership, and responsibility, while encouraging a Safety Culture. (Location type: Home Office) Total Reach: 27 Participants of the pilot sessions. (Manuel Pena)

- This program was developed in response to feedback from dairy producers who expressed a need for practical, on-farm training to reduce injuries and accidents and maximize animal performance. In response, we designed this effort to deliver targeted, farm-based education focused on real-world scenarios and immediate application, with the goal of improving worker safety, animal welfare and profitability. The bilingual Forward Farm Safety Toolbox is based on solid research and is designed to help agricultural operations create a strong safety culture. This foundation supports long-lasting behavior changes and ongoing leadership support for safety. The toolbox includes a hands-on training tools that helps farms, consultants, and instructors lead training sessions using a 20-40-40 model: 20% learning, 40% exploring, and 40% solving. This approach makes safety training more interactive than traditional presentations. Using adult-learning principles, it encourages participants to take ownership and responsibility. The added learning materials further support a workplace where safe behaviors become part of everyday farm life. This whole approach was tested in a pilot session to get feedback from the people who would be using it. Through pilot testing with farmers, participants reported improved understanding of workplace risks and identified specific changes they could implement immediately, such as safer animal handling, and tractor safety practices and clearer communication protocols among employees. Feedback from the pilot also helped refine the training to better align with different farm conditions, increasing its relevance and usability. This work contributes to broader societal goals by promoting safer agricultural workplaces, reducing the risk of injury, and supporting the well-being of farm employees.



Community Development



Community Development provides educational programming to assist leaders, communities, and organizations realize their fullest potential. We work with communities to build the vitality that enhances their quality of life and enriches the lives of their residents. We educate in leadership development, organizational development, food systems, community economic development, local government education and much more. In short, the Community Development Institute plants and cultivates the seeds for thriving communities and organizations.

Kirtis Orendorff, Community Development Educator

I presented at the Sheboygan County Municipal Clerk's meeting on demographic data sources that are available to the public, including the US Census Bureau's online database, the Applied Population Lab's GetFacts web page, and the Sheboygan County Planning Department's GIS online maps. Live demonstrations of accessing this data were conducted (Kirtis Orendorff)

- At the March Sheboygan County Clerk's meeting, discussions were held regarding where the role of the Community Development Educator could best provide research and educational materials to the group. The two immediate needs identified were data collection and comprehensive planning checklists. Data sources and collection methods was selected as the first topic to be addressed. I created a slideshow presentation and instructional guides for each of the 3 data sources I determined to be most important for the clerks to bring back to their municipalities. As mentioned, those 3 sources were the US Census online database, APL/GetFacts, and Sheboygan County GIS online maps. The goal of this presentation and educational material preparation is to ease the burden of comprehensive plan development for municipalities in Sheboygan County. Having access to these data sources should shorten the time spent on the initial development stage of the comprehensive planning process, as less time will ideally be spent "spinning their wheels" when trying to find data sources to identify issues and develop goals and strategies within the plan.



Positive Youth Development



Positive Youth Development prepares the youth of today to become the effective, empathetic adults of tomorrow. Our research-based youth enrichment programs like teens in governance build youth and adult capacity and partnerships that help both sides grow. 4-H clubs, camps and after-school programs give young people the hands-on experiences they need to develop an understanding of themselves and the world.

4-H | Sarah Feider, 4-H Program Educator

Preparation and planning for youth staff in grades 8-12 who will be counselors, leaders and role models for basecamp in the summer of 2026. (Sarah Feider)

- Basecamp at Upham Woods is 4 days where youth run activities, plan events, and keep youth engaged at camp. Youth staff are given time to work collaboratively to make decisions and prepare for this event. 4-H Educators prepared for five in person trainings and planning sessions leading up to camp. Included in the sessions is deciding camp themes, camper choice activities, campfires, and many other traditional programs that take part of camp. Also the 4-H educators go through policies, procedures, and emergency situations with the youth counselors and staff. This is an ongoing effort beginning in February and ending in July. Over the course of these five meetings, youth are gaining teamwork skills, building relationships, making decisions based on collaboration from the group as a whole.



An embryology program for fifth-grade students, where participants incubated eggs, followed the chick life cycle, and engaged in activities like candling and labeling egg structures. Through this effort, students strengthened their knowledge of biological systems and built foundational STEM skills through experiential learning. (Sarah Feider)

- Youth are curious and interested in life cycles, this program offers an interactive and engaging way for youth to learn about a specific animal and watch it grow. The 4-H Chick Quest program has been an excellent curriculum to reach the needs of teaching youth about food, animal science and agriculture. It also provided an excellent opportunity to partner with a local youth organization. Youth learned about the incubation environment, care for incubating eggs, chick development stages, egg science (parts of the egg), the hatching process and baby chick needs. It also gave me the opportunity to talk about 4-H and what our program offers.



A hands-on garden-based learning project for 4-H youth, where participants planted seeds, and contributed to designing and preparing a themed garden inspired by Harvey Potter's Balloon Farm to build responsibility, teamwork, and a connection to their community.

(Sarah Feider)

- Youth need opportunities to build practical skills and feel connected to their communities through meaningful contributions. This effort responded to that need by creating a hands-on, collaborative project that allows youth to learn, create, and participate in a public-facing community experience. In response to this need, a hands-on, garden-based learning experience was developed for 4-H youth. Youth engaged in planting and caring for seeds in a greenhouse setting, and will participate in painting, preparing, and installing a themed garden space inspired by Harvey Potter's Balloon Farm, culminating in a public opening event. This effort is helping youth build life skills such as responsibility, teamwork, and communication while engaging in meaningful, hands-on work. By contributing to a public garden space, youth are playing an active role in enhancing community resources, supporting informal education, and demonstrating the broader value of youth contributions to community development.



A sparks program for Middle School and High School students where students engaged in various activities throughout the school year to practice something new to them. Through this program, students will have greater implications on their intellectual, social, and emotional self. (Sarah Feider)

(Sarah Feider)

- The guidance counselor reached out to me to engage the youth at the school in areas that they were not necessarily familiar with. 4-H was a program that was unfamiliar to all students. In this particular school, the rural students do not or cannot participate in after school activities. Sarah Feider, 4-H Program Educator, partnered with the Sheboygan Area School District to bring 4-H and experimental learning to a new audience. Students engaged in activities through centering youth in the community, building belonging, and learning together - 4-H Core Values.



- ★ **“Sarah's friendliness, patience, and enthusiasm make 4-H activity time at CHANGE something to look forward to! From Legos to tasty cooking adventures to painting and more, the students benefit from the program, learn from it, and have fun doing so. Sarah's encouragement and positive feedback during the recent painting activity were beyond impressive, and it was wonderful to see the students stretch their imaginations and create masterpieces!” - Mary**



Positive Youth Development | Diana Hammer, Youth Development Educator

Students from three high schools participated in discussions and activities with county employees and elected officials to learn how county government works and affects them. (Diana Hammer)

- Sheboygan County requested Extension's PYD Educator help organize and lead a county youth government day that has been popular here in the past. Diana reached out to all area high schools about the opportunity, and three agreed to participate so their students could learn more about local government and careers. Diana designed and delivered an introductory class ahead of time to Central High School's American Government class. She adapted and expanded the lesson for the three sections of Kohler High's Advanced Placement Government class since they meet for longer class periods. In both schools, she used a Monopoly game customized to Sheboygan County as a teaching tool. On April 28, 29 students (15 from South High and 14 from Central High) attended Sheboygan County Government Day coordinated by the county administrator's office. Students heard presentations and participated in simulations hosted by the county administrator, deputy county administrator, county board vice-chair, sheriff, youth justice workers, circuit court judge, district attorney, planning director, county clerk, county register of deeds, human resources staff, and county treasurer. The American Legion provided lunch. Fourteen students responded to a feedback survey the next week. Out of a 1-5 scale, the average was 4 for:
 - "I learned about potential job opportunities,"
 - "I learned about a part of local government that affects me in my life today."
 - "I learned about a part of local government that might affect me in the future."

The majority stated their favorite activity of the day was the mock trial with Judge Sutkiewicz. They recommend making presentations more interactive next time. This feedback was used to improve Kohler's Government Day on May 18.

- ★ **"The best part of the day was the mock trials and being able to see what the court life is like and being able to see what they do." -Central High Student**



Value Added -*Sheboygan County Community members actively engage in UW -Madison Extension Regional and Statewide Program offerings. Highlights of these programs are shared in this section of the report.*

- A facilitated conversation with nonprofit leaders in Eastern Wisconsin, where participants learned ways to make their organization and its activities more inviting to people of different backgrounds to serve the community and foster support to carry out the organization's mission. (Location type: Geography Served)
- Healthcare in the Digital Age is a workshop for leaders in the Northeastern region of the state (elected officials, community and economic development, healthcare related fields) where participants explore the critical connection between broadband access and improved health outcomes—and how these advancements drive local economic growth. (Location type: Geography Served)

Jayna Hintz <i>Area Extension Director</i>	Sarah Feider <i>4-H Youth Educator</i>	Emily Lamb <i>Support Staff</i>
Manuel Peña <i>Regional Dairy Educator</i>	Diana Hammer <i>Positive Youth Development Educator</i>	Cassi Worster <i>Marketing Specialist</i>
Kirtis Orendorff <i>Community Development Educator</i>		

The University of Wisconsin–Madison Division of Extension provides equal opportunities in employment and programming in compliance with state and federal law.

CONSERVATION ENDOWMENT FUNDING REQUEST

In 2023, Sheboygan County received a settlement from Monsanto, a major agricultural biotechnology corporation. Between 1930 and 1977, Monsanto manufactured a class of PCBs that contributed to environmental contamination. On January 16, 2024, the County Board adopted Resolution No. 20 (2023/24), authorizing the settlement funds to be placed into an endowment. Interest generated from the endowment can then be designated to support conservation projects that protect the landscape and improve water quality within the County. To date, the endowment has \$82,404.53 available in interest, which can be utilized pending Committee approval. Below is a recent funding request for your consideration.

Owner(s) Name:	Maywood Park	Project Type:	Streambank Stabilization Project
Property Address:	3615 Mueller Rd	Project Acreage:	~150 Linear Feet
Parcel Number(s):	5928168955	Timeline:	2026
Funding Request:	\$20,650		

Project Description:

This project will stabilize an actively eroding streambank that is threatening the Bluebird Trail hiking path and contributing sediment and nutrients to the Pigeon River. The proposed work includes regrading and reshaping the bank to create a stable slope, installing rock armor for erosion protection, and establishing native vegetation on the upper bank to provide long-term stabilization and habitat benefits.

Why Funding is Needed:

Originally requested as a Stewardship Project. However, due to funding constraints with the Stewardship Program we recommend funding this project using Monsanto funds. This project aligns well with using Monsanto funds and was ranked highest amongst Stewardship applications primarily from a water quality standpoint.

Partners Involved:

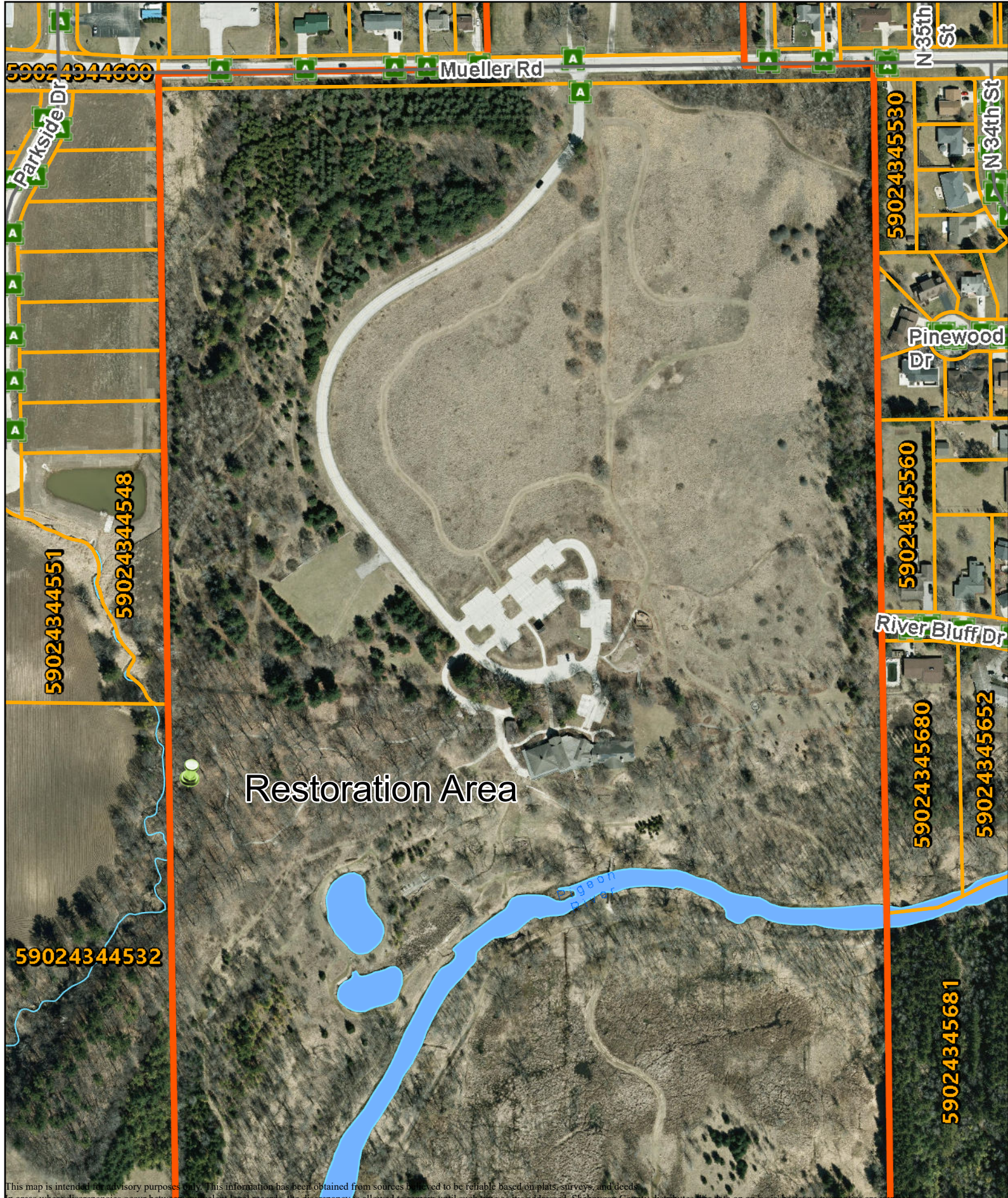
City of Sheboygan, Lakeshore Natural Resource Partnership, & Sheboygan River Basin Partnership

Conservation Benefits, Significance, and/or Uniqueness:

This project reduces sediment/nutrients loading into the Pigeon River. It protects both aquatic and terrestrial habitat by improving water quality and by establishing native plantings along the restored bank. This project is unique because not only does it hold conservation value but recreational value as well because it looks to stop further damage to the Bluebird Hiking Trail.

Does This Project Fit Within an Existing Conservation Initiative?

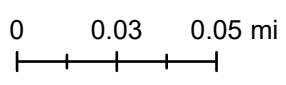
Yes, Maywood Park is located within the project area of the Pigeon River 9-Key Element area which has been a priority for our Department for the past several years. The primary goal of the 9-Key Element plan is to improve water quality in the pigeon river by reducing non-point source pollution. This project does exactly that.



This map is intended for advisory purposes only. This information has been obtained from sources believed to be reliable based on plats, surveys, and deeds. In areas where discrepancies occur between equivalent legal records, the discrepancy is allowed to remain until such time as it is addressed. Sheboygan County distributes this data on an 'as is' basis; no warranties are implied.



ArcGIS Web Map





Sheboygan County Planning & Conservation Department

Administration Building

508 New York Avenue

Sheboygan, WI 53081-4126

P: (920) 459-3060

P: (920) 459-1370

F: (920) 459-1371

E: plancon@sheboygancounty.com

Director

Aaron C. Brault

Memo

TO: Sheboygan County Recreational Facilities Management Advisory Committee Members

FROM: Tyler Betry 

DATE: June 3rd, 2026

RE: 2026 Stewardship Staff Recommendation

The Stewardship Program received six applications this year, all of which are worthy projects. However, as is often the case, the total amount requested exceeded the funding available. This year, applicants requested a combined total of \$113,501, while only \$62,489.93 is available for distribution—nearly double the amount of funding available.

In previous years, staff and the Sheboygan County Recreational Facilities Management Advisory Committee (SCRFMAC) have generally recommended fully funding the highest-scoring projects and then partially funding the remaining qualifying projects based on available funds. Staff is recommending a similar approach this year. However, due to the significant gap between available funding and requested amounts, additional adjustments were necessary to distribute funds as fairly and effectively as possible.

Fortunately, one of the submitted projects aligns well with an alternative funding source that can be utilized instead of Stewardship Program funds. This project also ranked highest in the scoring process. Additionally, another project that tied for second requested an amount significantly higher than the program’s typical award levels. Staff is recommending reducing that request to better align with funding allocations from prior years. Based on the project scoring, staff recommends dividing the remaining applications into three funding tiers. Under this recommendation, the “top tier” application would receive full funding, “middle tier” applications would receive 80% of their requested amount, and “lower tier” applications would receive 70% of their requested amount.

On June 1st, SCRFMAC unanimously agreed on staff’s funding recommendations. The attached memos provide additional detail regarding staff recommendations, including the rationale for recommending reduced or no funding for certain projects. The chart below outlines the proposed funding breakdown recommended by staff.

Applicant	Ask	Tier Percentage	Staff Recommendation	Average Rating
Maywood	\$20,650.00	1.00	\$20,650 using other funds	29.0
Sheboygan Falls Football Club	\$38,951.00	1.00	Lower funding to \$20,000	24.7
Sheboygan County Cycling	\$8,528.00	1.00	\$8,528.00	24.7
ROOTS	\$15,000.00	0.80	\$12,000.00	23.0
Glacial Lakes Conservancy	\$5,372.00	0.80	\$4,297.60	22.7
Cheese Capital Winter Park	\$25,000.00	0.70	\$17,500.00	21.7
	\$113,501.00		\$62,325.60	



Sheboygan County

Planning & Conservation Department

Administration Building

508 New York Avenue

Sheboygan, WI 53081-4126

P: (920) 459-3060

P: (920) 459-1370

F: (920) 459-1371


E: plancon@sheboygancounty.com

Director

Aaron C. Brault

Memo

TO: Sheboygan County Recreational Facilities Management Advisory Committee Members

FROM: Tyler Betry 

DATE: May 28, 2026

RE: 2026 Stewardship Staff Recommendation: Maywood Park – Streambank Stabilization Project

The Environmental Park Trust of Sheboygan County and the City of Sheboygan submitted a project development application requesting \$20,650 for an ecological streambank restoration project along Bluebird Trail in Maywood Park.

The project area consists of an eroding streambank that is threatening the nearby Bluebird Trail hiking path. The erosion along the outer bend of the streambank gully is undermining the trail, contributing sediment and nutrient loading downstream into the Pigeon River, degrading aquatic and terrestrial habitat, and damaging trail infrastructure. If left unaddressed, the erosion will continue to worsen, further impacting the trail and increasing sediment and nutrient loading to the river. To resolve this issue, they are proposing to regrade and reshape the bank to create a more stable slope, use rock armor the bank, and replant the upper bank with native vegetation.

Based on the application review, the project ranked in the highest tier of applications and received the top overall score, with an average staff score of 29/58. Staff recommends that the Recreational Facilities Management Advisory Committee approve funding in the full amount of \$20,650. Staff further recommends that funding be provided through the Department's non-lapsing Water Quality Improvement Project account (Monsanto settlement funds) rather than Stewardship Program funds.

Below are the project strengths and concerns identified by staff.

Pros

- Scored the best out of all applications
- Both recreational and environmental benefits
- Many partners involved
- Project within 9KE area

Cons

Stewardship funding constraints



Sheboygan County ***Planning & Conservation Department***

Administration Building

508 New York Avenue

Sheboygan, WI 53081-4126

P: (920) 459-3060

P: (920) 459-1370

F: (920) 459-1371

E: plancon@sheboygancounty.com

Director

Aaron C. Brault

Memo

TO: Sheboygan County Recreational Facilities Management Advisory Committee Members

FROM: Tyler Betry *TJB*

DATE: May 28, 2026

RE: 2026 Stewardship Staff Recommendation: Sheboygan Falls Football Club – West Side Rec Area Development

The Sheboygan Falls Football Club (SFFC) submitted a project development application requesting \$38,951 to assist with erosion control, earthwork, turf seeding, and stormwater inlet protection as part of the West Side Recreational Area development project.

The West Side Recreational Area has been in development planning since 2013 and is intended to provide expanded recreational opportunities for the Sheboygan Falls community. The overall project is planned in four phases. Phase 1 includes site grading and leveling, turf establishment, field painting, tree planting, and utility installation. Phase 2 focuses on recreational enhancements such as soccer fields, parking areas, and pavilions. Phase 3 includes the development of a community gathering space featuring a pavilion, restrooms, seating areas, and drinking fountains. The final phase consists of installing lighting, boardwalks, and an asphalt trail system to improve accessibility and connectivity throughout the site.

The current funding request is specifically for erosion control measures and stormwater management practices needed during site development, including inlet protection, earthwork, and turf establishment. These practices are important for minimizing sediment runoff, protecting downstream water quality, and stabilizing the site as construction progresses.

Based on the application review, the project tied for second place and ranked within the highest tier of applications, receiving an average staff score of 24.7/58. Staff recommends that the Recreational Facilities Management Advisory Committee approve partial funding in the amount of \$20,000. While the project is considered highly worthwhile, the requested amount exceeds typical funding levels awarded through the program. The recommended amount reflects a level of funding that similar projects have historically received while still allowing funding opportunities for additional applicants.

Below are the project strengths and concerns identified by staff.

Pros

- Scored very high for recreation
- Needed for the area
- Economic component

Cons

- Very high funding request (asking for more than half available funds)



Sheboygan County Planning & Conservation Department

Administration Building

508 New York Avenue

Sheboygan, WI 53081-4126

P: (920) 459-3060

P: (920) 459-1370

F: (920) 459-1371

E: plancon@sheboygancounty.com

Director

Aaron C. Brault

Memo

TO: Sheboygan County Recreational Facilities Management Advisory Committee Members

FROM: Tyler Betry *TJB*

DATE: May 28, 2026

RE: 2026 Stewardship Staff Recommendation: Sheboygan County Cycling – Greenbush Trail Upgrades

The Sheboygan County Cycling Inc. (SCC) submitted a project development application requesting \$8,528 in order to reconstruct 1,957 linear feet of mountain bike trails in the Greenbush Recreation Area, a part of the Kettle Moraine State Forest.

Greenbush is a unique multi-use recreation area featuring separate trail systems for hiking, mountain biking, cross-country skiing, and snowmobiling. While the proposed work specifically targets mountain bike trails, the improvements benefit the broader park system by maintaining safe, sustainable, and well-managed recreational infrastructure.

The project includes improvements to several sections of Loop 2 and Loop 3 trails. Proposed work consists of trail reconstruction and partial rerouting, removal of excess rock material, installation of improved trail surfaces, and incorporation of grade reversals and berms to better manage stormwater runoff, reduce erosion, and improve rider safety and trail flow. These improvements are intended to stabilize problem areas, minimize ongoing maintenance needs, and reduce sediment movement from trail corridors.

Based on the application review, the project tied for second place, receiving an average staff score of 25/58. Staff recommends that the Recreational Facilities Management Advisory Committee approve funding in the project amount of \$8,528 in full contingent upon obtaining the required 50% or more match. The project ranked in the highest tier of applications. Below are the project strengths and concerns identified by staff.

Pros

- DNR supports
- Resolve safety concerns
- Strong past applicant
- Scored well

Cons

- Didn't score as high in the environmental side. More rec based.
- No State funding, though buy-in from park



Sheboygan County

Planning & Conservation Department

Administration Building

508 New York Avenue

Sheboygan, WI 53081-4126

P: (920) 459-3060

P: (920) 459-1370

F: (920) 459-1371

E: plancon@sheboygancounty.com

Director

Aaron C. Brault

Memo

TO: Sheboygan County Recreational Facilities Management Advisory Committee Members

FROM: Tyler Betry 

DATE: May 28, 2026

RE: 2026 Stewardship Staff Recommendation: Restoration of Our Trees (ROOTS) – Campus Reforestation Efforts

Restoration of Our Trees (ROOTS) submitted a project development application requesting \$15,000 in order to lead in the reforestation of four Sheboygan Area School District campuses (James Madison, Sheridan, Longfellow and Horace Mann).

ROOTS is seeking funding to continue its community reforestation program aimed at mitigating significant losses to the local tree canopy caused by Emerald Ash Borer infestations, disease, storm damage, and the natural aging of trees on public school properties. The project focuses on establishing new, diverse tree plantings to improve long-term canopy resilience and environmental health throughout the community. This initiative provides an accelerated and cost-effective, education-based approach to evaluating, planning, and implementing reforestation efforts across four Sheboygan Area School District campuses. In addition to improving aesthetics and environmental quality, the project creates valuable outdoor learning opportunities for students by incorporating education and community stewardship into the planting efforts.

The participating school campuses serve students from both the City of Sheboygan and surrounding Sheboygan County communities, including the Towns of Wilson, Sheboygan, and neighboring areas. By restoring tree canopy on these highly visible public properties, the project will provide long-term benefits including improved shade, stormwater management, air quality, wildlife habitat, and overall community character.

Based on the application review the project received an average staff score of 23/58. Staff recommends that the Recreational Facilities Management Advisory Committee approve funding in the project amount of \$12,000 contingent upon obtaining the required 50% or more match. The project ranked in the middle tier of applications. Below are the project strengths and concerns identified by staff.

Pros

- Lots of support
- Strong past applicant
- Multi-project with different schools

Cons

- Didn't score as high on the recreational side. More environmentally based.



Sheboygan County ***Planning & Conservation Department***

Administration Building

508 New York Avenue

Sheboygan, WI 53081-4126

P: (920) 459-3060

P: (920) 459-1370

F: (920) 459-1371


E: plancon@sheboygancounty.com

Director

Aaron C. Brault

Memo

TO: Sheboygan County Recreational Facilities Management Advisory Committee Members

FROM: Tyler Betry 

DATE: May 28, 2026

RE: 2026 Stewardship Staff Recommendation: Glacial Lakes Conservancy (GLC) – Grasshopper Hill Trail Improvements

Glacial Lakes Conservancy (GLC) submitted a project development application requesting \$5,372 to conduct trail improvements within the Grasshopper Hill Preservation area in Elkhart Lake.

The proposed project at Grasshopper Hill Preserve focuses on protecting and restoring the trail system through erosion control measures, trail repairs, and a trail reroute designed to improve long-term sustainability and habitat quality. The rerouted trail will reduce erosion caused by steep grades and stormwater runoff while also improving visitor safety, accessibility, and the overall recreational experience. Planned improvements include creating more gradual trail alignments, enhancing scenic viewpoints and potential overlook areas, installing educational and directional signage, and clearing invasive buckthorn in areas affected by the reroute. Equipment purchases and rentals are also included to assist with trail construction and signage installation.

The Glacial Lakes Conservancy (GLC) anticipates the project will provide lasting benefits for both wildlife and visitors. Removal of invasive species and restoration of native habitat will improve ecological health, while the improved trail system will create a more accessible and enjoyable outdoor experience that fosters a stronger connection to the local landscape and encourages environmental stewardship.

Based on the application review the project received an average staff score of 22.7/58. Staff recommends that the Recreational Facilities Management Advisory Committee approve funding in the project amount of \$4,297.60 contingent upon obtaining the required 50% or more match. The project ranked in the middle tier of applications. Below are the project strengths and concerns identified by staff.

Pros

- Both rec and environmental benefits
- Past applicant
- Not just invasive treatments
- We have funded projects for this preserve in the past

Cons

- Little area for access



Sheboygan County ***Planning & Conservation Department***

Administration Building

508 New York Avenue

Sheboygan, WI 53081-4126

P: (920) 459-3060

P: (920) 459-1370

F: (920) 459-1371

E: plancon@sheboygancounty.com

Director

Aaron C. Brault

Memo

TO: Sheboygan County Recreational Facilities Management Advisory Committee Members
FROM: Tyler Betry *TJB*
DATE: May 28, 2026
RE: 2026 Stewardship Staff Recommendation: Cheese Capital Winter Park – Regrading & Seeding

Cheese Capital Winter Park submitted a project development application requesting \$25,000 in order to regrade and reseed the sledding area of the hill.

After the first season of operation, it became apparent that portions of the hill require regrading and reseeding to improve both safety and long-term sustainability. Over time, inconsistencies developed in certain areas of the slope, creating uneven conditions for tubers. Regrading the hill will help establish a smoother, more controlled, and predictable surface, improving rider safety and enhancing the overall tubing experience.

In addition to safety improvements, creating a more consistent grade will help reduce erosion issues caused by concentrated runoff and heavy seasonal use. Reseeding disturbed areas will stabilize the soil, strengthen vegetative cover, and protect the hill from ongoing wear and tear associated with winter operations and weather conditions.

This investment will protect the significant progress already made at Nutt Hill, improve operational efficiency and user safety, and help ensure the facility continues to provide a high-quality, community-focused recreational experience for years to come.

Based on the application review the project received an average staff score of 21.7/58. Staff recommends that the Recreational Facilities Management Advisory Committee approve funding in the project amount of \$17,500 contingent upon obtaining the required 50% or more match. The project ranked in the lower tier of applications. Below are the project strengths and concerns identified by staff.

Pros

- Provides a safer experience
- Past applicant

Cons

- Expensive
- These types of projects tend to rank lower

1 **SHEBOYGAN COUNTY RESOLUTION NO. _____ (2026/27)**

2
3 **Re: Adopting the 2026 Sheboygan County Broughton Marsh**
4 **Management Plan**

5
6
7 **WHEREAS**, the Planning, Resources, Agriculture and Extension Committee has
8 adopted an update of the Sheboygan County Broughton Marsh (Marsh) Management Plan
9 (Plan) prepared by its Planning & Conservation Department (Department) and reviewed by the
10 Sheboygan County Recreational Facilities Management Advisory Committee (SCRFMAC); and

11
12 **WHEREAS**, the Department and SCRFMAC solicited comments through a number of
13 public open houses, public meetings and community surveys; and

14
15 **WHEREAS**, the Plan has again been updated after consideration of the above public
16 input, and the current draft (copies of which are on file in the County Clerk's Office, the
17 Department, and the County's website) is suitable for adoption as a broad, long-range
18 management plan to meet the recreation, environmental, and natural resource needs of the
19 County for the Marsh; and

20
21 **WHEREAS**, the Planning, Resources, Agriculture and Extension Committee
22 recommends that the County Board adopt the Plan.

23
24 **NOW, THEREFORE, BE IT RESOLVED** that the Sheboygan County Board hereby
25 approves the 2026 Sheboygan County Marsh Management Plan, a copy of which is on file with
26 the County Clerk's Office.

27
28 Respectfully submitted this 21st day of July, 2026.

29
30
31 **PLANNING, RESOURCES, AGRICULTURE, AND EXTENSION COMMITTEE***

32
33
34
35 _____
36 Rebecca Clarke, Chairperson

35 _____
36 John Nelson, Vice-Chairperson

37
38 _____
39 Joe Liebau, Jr., Secretary

37
38 _____
39 David Otte

40
41 _____
42 Brian Smith

43 Opposed to Introduction:

44
45 _____
46
47 *County Board members signing only

Sheboygan County

Capital Project Funding Request

Project Name: Interurban Trail Maintenance
Department: Planning & Conservation
Project Manager(s): Aaron Brault
Liaison Committee: Planning, Resources, Ag & Extension
Project Number: 922

1 Project Case

1.1 Project Overview

The Interurban Trail connects Southeast Wisconsin. To the south, 30 miles of paved off-road trail runs the length of Ozaukee County and connects to a number of routes in the Milwaukee metro area. North of the County line, approximately 5.5 miles runs north to the southside of Oostburg off-road and then another approximately 9 miles runs north on-road to Kohler-Andrae State Park. The trail system is very popular with residents and visitors alike. That said, the 5.5 mile off-road section in Sheboygan County is in need of preventative maintenance after nearly 20 years. This project would repave small areas where willow trees have sprouted through the asphalt, tar cracks and then chip seal/sealcoat and roll the length of the trail. Two culverts will also likely need replacement.

2 Primary Project Purpose/Objectives

Maintain an existing asset.

3 Project Identification and Alternatives

Extend the life of the pavement by 5-10 years.

4 Project Issues

None anticipated.

5 Project Cost Worksheet

Funding	Expenditure	Other Funding	Bonding	Funding
Prior years	\$ -	\$ -	\$ -	
2027 - 1st quarter				
2027 - 2nd quarter	\$ 75,000			
2027 - 3rd quarter	\$ 75,000			
2027 - 4th Quarter				
2027 Total	\$ 150,000	\$ -	\$ 150,000	
2028 - 1st quarter				
2028 - 2nd quarter				
2028 - 3rd quarter				
2028 - 4th Quarter				
2028 Total	\$ -	\$ -	\$ -	
2029 - 1st quarter				
2029 - 2nd quarter				
2029 - 3rd quarter				
2029 - 4th Quarter				
2029 Total	\$ -	\$ -	\$ -	
2030 - 1st quarter				
2030 - 2nd quarter				
2030 - 3rd quarter				
2030 - 4th Quarter				
2030 Total	\$ -	\$ -	\$ -	
2031 - 1st quarter				
2031 - 2nd quarter				
2031 - 3rd quarter				
2031 - 4th Quarter				
2031 Total	\$ -	\$ -	\$ -	
SUB TOTAL 2027-2031	\$ 150,000	\$ -	\$ 150,000	
Later Years			\$ -	
TOTAL	\$ 150,000	\$ -	\$ 150,000	
Check	\$ -	\$ -	\$ -	
Additional details Other Funding				

5 Project Cost Worksheet (continued)

Departmental cost		DEPARTMENT	DEPARTMENT	ASSET LIFE
	TOTAL			YEARS
Land	\$ -			
Buildings	\$ -			
Infrastructure	\$ -			
Improvements other than Building	\$ 150,000			10
Equipment	\$ -			
Computer Hardware	\$ -			
Computer Software	\$ -			
Consulting	\$ -			
Other	\$ -			
TOTAL	\$ 150,000	\$ -	\$ -	
Check	\$ -			

5 Project Cost Summary

Year	Total Cost	Other Funding	Bonding
Prior Years	\$ -	\$ -	\$ -
2027	\$ 150,000	\$ -	\$ 150,000
2028	\$ -	\$ -	\$ -
2029	\$ -	\$ -	\$ -
2030	\$ -	\$ -	\$ -
2031	\$ -	\$ -	\$ -
SUB Total	\$ 150,000	\$ -	\$ 150,000
Later Years	\$ -	\$ -	\$ -
TOTAL	\$ 150,000	\$ -	\$ 150,000

6 Project Priority	Check all that	Enter minimum amount required in
1 Legally binding contract full sum payment in 1st year?		
2 A statutory or other requirement to spend all of Year 1 money?		
3 Legally binding contract but flexibility in 1st year payments?		\$
4 A statutory or other requirement with flexibility in 1st year payments?		\$
5 Operationally viewed essential-give reason: Maintaining an asset and providing a safe facility.	x	
6 Other Priority reason: Appearances		
7 Project desirable, either improving service or efficiency:		\$

7 Project Duration Estimates

Project Milestone	Date Estimate
Project Start Date	Summer 2026
Project Bids Solicited	Local Forces
Project Contracts Signed	Local Forces
Project Construction to begin	Summer 2026
Project Construction to end	Fall 2026
Final Payments for Project completion	Winter 2026

8 Project Users	Impacts and Interface
External	Residents and visitors.
Business/Residences on route	Neighbors may be temporarily inconvenienced during construction.
Internal Staff	Department would have to maintain the trail.

Sheboygan County

Capital Project Funding Request

Project Name:	Sheboygan Marsh Boardwalk
Department:	Planning & Conservation
Project Manager(s):	Aaron Brault
Liaison Committee:	Planning, Resources, Ag & Extension
Project Number:	921

1 Project Case

1.1 Project Overview

The Marsh Park is a popular destination, and comprises about 30 acres (within the 9,000 acre overall complex), with a historic lodge, restaurant, 80-foot observation tower, campground, picnic area, and boat launch. However, opportunities for the public to experience the Marsh remain limited because of inaccessibility of the vast majority of the Marsh, except by boat or during winter ice cover. Improved public access aligns with the construction of the new multi-purpose educational classroom and meeting facility, named the Kohler Center for Marsh Education, which supports environmental education activities run by the Camp-Y-Koda Outdoor Skills and Education program. Wetland restoration and wildlife management at the Marsh will continue to be a major component of the curriculum, and walking trails, marsh boardwalks and interpretive signs will be developed surrounding the new facility. In support of Camp-Y-Koda programming and an enhanced Park user experience, the Department is seeking funding to design a wetland boardwalk and bridge to create a trail loop into the Marsh, which will substantially increase public accessibility and enjoyment of the Marsh. A grant was received in 2021 to design the boardwalk. The concepts created by that effort have been very, very well received by adults, parents, and the thousands of school children that attend classes every year. This funding would help implement what will be a tremendously popular project that is already designed.

2 Primary Project Purpose/Objectives

Improved public access, enjoyment, and educational opportunities at the Marsh will be provided by a new wetland boardwalk and bridge that connect the Park facilities to a previously inaccessible portion of the Marsh. The proposed boardwalk and bridge design provides at least a one-mile accessible path and offers opportunities for park users and students to access the Marsh and learn about wetland ecology. The project will include permanent interpretive signs and provide access for environmental education programs including the Camp YKoda Outdoor Skills Center, which is a popular program and widely utilized by community groups and school districts across Sheboygan County. Camp YKoda operates a 2-day hands-on environmental science program for nearly every school district in the

county, as well as some from surrounding counties, reaching over 1,000 kids each year. For many children, their visit to the Sheboygan Marsh is their first immersion into the natural world. It's their first time practicing science outside of the classroom, and their first time realizing a career in science is not only fun, but possible. The new Kohler Center for Marsh Education provides expanded indoor and outdoor classroom space for Camp Y-Koda and would be complemented by the adjacent one-mile trail and boardwalk loop through the Marsh. The loop will include a new, approximately 1,900-foot boardwalk through the Marsh, a new bridge crossing of the South Ditch at the north end, and tie into the new culvert crossing of the South Ditch at the south end. The new culvert replaced an undersized and functionally obsolete culvert that was not able to efficiently manage water levels in the South Ditch. Improved access to the Marsh offered by this boardwalk and trail will provide a significant benefit to the public, connecting visitors to Park facilities like the campground, tower, restaurant, fishing piers, boat launch, and disc golf course, in addition to providing access to Marsh habitats. The improved public access and educational opportunities are expected to substantially increase visits to the Marsh.

3 Project Identification and Alternatives

Provide access where none previously existed. Dating back to 1991, plans for the Marsh have all called for the development of some kind of trail system. When the public is surveyed, this type of amenity is consistently one of, if not the, top-ranked items that is missing from the Marsh. That said, it is difficult to find spaces to create something like that in a marsh. The proposed project would fulfill the public's desire, that again, has been consistently shown to have demand dating back thirty years or more

4 Project Issues

Obtaining all of the funding will take some work though, again, the concepts for this project have been very well received. At this time, it is not anticipated being able to receive additional funding will be an unsurmountable barrier. That said, most granting agencies/entities want to see the sponsor have "skin-in-the-game" and that is what this request signifies at less than 25% of the total project cost.

5 Project Cost Worksheet

Funding	Expenditure	Other Funding	Bonding	Funding
Prior years	\$ -	\$ -	\$ -	
2027 - 1st quarter				
2027 - 2nd quarter				
2027 - 3rd quarter	\$ 750,000	\$ 600,000		Grants/Private
2027 - 4th Quarter	\$ 750,000	\$ 600,000		
2027 Total	\$ 1,500,000	\$ 1,200,000	\$ 300,000	
2028 - 1st quarter				
2028 - 2nd quarter				
2028 - 3rd quarter				
2028 - 4th Quarter				
2028 Total	\$ -	\$ -	\$ -	
2029 - 1st quarter				
2029 - 2nd quarter				
2029 - 3rd quarter				
2029 - 4th Quarter				
2029 Total	\$ -	\$ -	\$ -	
2030 - 1st quarter				
2030 - 2nd quarter				
2030 - 3rd quarter				
2030 - 4th Quarter				
2030 Total	\$ -	\$ -	\$ -	
2031 - 1st quarter				
2031 - 2nd quarter				
2031 - 3rd quarter				
2031 - 4th Quarter				
2031 Total	\$ -	\$ -	\$ -	
SUB TOTAL 2027-2031	\$ 1,500,000	\$ 1,200,000	\$ 300,000	
Later Years			\$ -	
TOTAL	\$ 1,500,000	\$ 1,200,000	\$ 300,000	
Check	\$ -	\$ -	\$ -	

Additional details Other Funding

As of this submission, \$1.43M of the expected \$1.5M needed has been raised if you include this \$300,000 request.

5 Project Cost Worksheet (continued)

Departmental cost		DEPARTMENT	DEPARTMENT	ASSET LIFE
	TOTAL			YEARS
Land	\$ -			
Buildings	\$ -			
Infrastructure	\$ -			
Improvements other than Building	\$ 1,500,000			50
Equipment	\$ -			
Computer Hardware	\$ -			
Computer Software	\$ -			
Consulting	\$ -			
Other	\$ -			
TOTAL	\$ 1,500,000	\$ -	\$ -	
Check	\$ -			

5 Project Cost Summary

Year	Total Cost	Other Funding	Bonding
Prior Years	\$ -	\$ -	\$ -
2027	\$ 1,500,000	\$ 1,200,000	\$ 300,000
2028	\$ -	\$ -	\$ -
2029	\$ -	\$ -	\$ -
2030	\$ -	\$ -	\$ -
2031	\$ -	\$ -	\$ -
SUB Total	\$ 1,500,000	\$ 1,200,000	\$ 300,000
Later Years	\$ -	\$ -	\$ -
TOTAL	\$ 1,500,000	\$ 1,200,000	\$ 300,000

6 Project Priority	Check all that	Enter minimum amount required in
1 Legally binding contract full sum payment in 1st year?		
2 A statutory or other requirement to spend all of Year 1 money?		
3 Legally binding contract but flexibility in 1st year payments?		\$
4 A statutory or other requirement with flexibility in 1st year payments?		\$
5 Operationally viewed essential-give reason: Maintaining an asset and providing a safe facility.		
6 Other Priority reason:		
7 Project desirable, either improving service or efficiency:	x	1500000

7 Project Duration Estimates

Project Milestone	Date Estimate
Project Start Date	Started 2022
Project Bids Solicited	Fall 2026
Project Contracts Signed	Early Winter 2027
Project Construction to begin	Early Winter 2027
Project Construction to end	Spring 2027
Final Payments for Project completion	Summer 2027

8 Project Users	Impacts and Interface
External	Residents and visitors to our County will have another great amenity to explore.
Business/Residences on route	The vendor at the Marsh is highly supportive of this project as it will only enhance visitation to the campground and tavern.
Internal Staff	Staff will have ongoing maintenance, but very little is anticipated for at least 20-30 years.

Sheboygan County

Capital Project Funding Request

Project Name:	Old Plank Road Trail Maintenance (Sheboygan to Plymouth)
Department:	Planning & Conservation
Project Manager(s):	Aaron Brault
Liaison Committee:	Planning, Resources, Ag & Extension
Project Number:	916

1 Project Case

1.1 Project Overview

The Old Plank Road Trail connects East-Central Wisconsin. To the west, 15 miles of paved off-road trail runs the length of eastern Fond du Lac County and connects to a number of routes beyond. East of the County line, approximately 20 miles runs east to the westside of Sheboygan and connects to the Urban Rec Trail for another 3 miles before connecting to the lakefront trail. The trail system is very popular with residents and visitors alike. That said, the 9 mile section between Sheboygan and Plymouth is in need of preventative maintenance after nearly 20 years. This project would tar cracks and then chip seal/sealcoat and roll this length of the trail. A number of culverts will need replacement and/or repair as well.

2 Primary Project Purpose/Objectives

Maintain an existing asset.

3 Project Identification and Alternatives

Extend the life of the pavement by 5-10 years.

4 Project Issues

None anticipated.

5 Project Cost Worksheet

Funding	Expenditure	Other Funding	Bonding	Funding
Prior years	\$ -	\$ -	\$ -	
2027 - 1st quarter				
2027 - 2nd quarter				
2027 - 3rd quarter				
2027 - 4th Quarter				
2027 Total	\$ -	\$ -	\$ -	
2028 - 1st quarter				
2028 - 2nd quarter	\$ 125,000			
2028 - 3rd quarter	\$ 125,000			
2028 - 4th Quarter				
2028 Total	\$ 250,000	\$ -	\$ 250,000	
2029 - 1st quarter				
2029 - 2nd quarter				
2029 - 3rd quarter				
2029 - 4th Quarter				
2029 Total	\$ -	\$ -	\$ -	
2030 - 1st quarter				
2030 - 2nd quarter				
2030 - 3rd quarter				
2030 - 4th Quarter				
2030 Total	\$ -	\$ -	\$ -	
2031 - 1st quarter				
2031 - 2nd quarter				
2031 - 3rd quarter				
2031 - 4th Quarter				
2031 Total	\$ -	\$ -	\$ -	
SUB TOTAL 2027-2031	\$ 250,000	\$ -	\$ 250,000	
Later Years			\$ -	
TOTAL	\$ 250,000	\$ -	\$ 250,000	
Check	\$ -	\$ -	\$ -	
Additional details Other Funding				

5 Project Cost Worksheet (continued)

Departmental cost		DEPARTMENT	DEPARTMENT	ASSET LIFE
	TOTAL			YEARS
Land	\$ -			
Buildings	\$ -			
Infrastructure	\$ -			
Improvements other than Building	\$ 250,000			10
Equipment	\$ -			
Computer Hardware	\$ -			
Computer Software	\$ -			
Consulting	\$ -			
Other	\$ -			
TOTAL	\$ 250,000	\$ -	\$ -	
Check	\$ -			

5 Project Cost Summary

Year	Total Cost	Other Funding	Bonding
Prior Years	\$ -	\$ -	\$ -
2027	\$ -	\$ -	\$ -
2028	\$ 250,000	\$ -	\$ 250,000
2029	\$ -	\$ -	\$ -
2030	\$ -	\$ -	\$ -
2031	\$ -	\$ -	\$ -
SUB Total	\$ 250,000	\$ -	\$ 250,000
Later Years	\$ -	\$ -	\$ -
TOTAL	\$ 250,000	\$ -	\$ 250,000

6 Project Priority	Check all that	Enter minimum amount required in
1 Legally binding contract full sum payment in 1st year?		
2 A statutory or other requirement to spend all of Year 1 money?		
3 Legally binding contract but flexibility in 1st year payments?		\$
4 A statutory or other requirement with flexibility in 1st year payments?		\$
5 Operationally viewed essential-give reason: Maintaining an asset and providing a safe facility.	x	\$ 250,000
6 Other Priority reason: Appearances		
7 Project desirable, either improving service or efficiency:		\$

7 Project Duration Estimates

Project Milestone	Date Estimate
Project Start Date	Summer 2028
Project Bids Solicited	Local Forces
Project Contracts Signed	Local Forces
Project Construction to begin	Summer 2028
Project Construction to end	Fall 2028
Final Payments for Project completion	Winter 2028

8 Project Users	Impacts and Interface
External	Sections of trail will have to be shut down during the work. These inconveniences will be minimal.
Business/Residences on route	N/A
Internal Staff	Department would have to maintain the trail.

Sheboygan County

Capital Project Funding Request

Project Name:	Shoreland 400 Trail/Southside Utility Corridor Trail Maintenance
Department:	Planning & Conservation
Project Manager(s):	Aaron Brault
Liaison Committee:	Planning, Resources, Ag & Extension
Project Number:	923

1 Project Case

1.1 Project Overview

The Shoreland 400 connects the City of Sheboygan. The trail runs nearly 2 miles through the heart of the City connecting neighborhoods, businesses and recreation areas. The trail system is very popular with residents and visitors alike. On busy days, the trail sees over 500 users which is much more than some of our rural County trunk highways. The same is true for the Southside Utility Corridor Trail. This 1-mile section runs in the County-owned portion of the utility corridor. These trail sections will be in need of preventative maintenance after nearly 15 years and 11 years respectively. This project would tar cracks and then chip seal/sealcoat and roll these lengths of trail.

2 Primary Project Purpose/Objectives

Maintain an existing asset.

3 Project Identification and Alternatives

Extend the life of the pavement by 5-10 years.

4 Project Issues

None anticipated.

5 Project Cost Worksheet

Funding	Expenditure	Other Funding	Bonding	Funding
Prior years	\$ -	\$ -	\$ -	
2027 - 1st quarter				
2027 - 2nd quarter				
2027 - 3rd quarter				
2027 - 4th Quarter				
2027 Total	\$ -	\$ -	\$ -	
2028 - 1st quarter				
2028 - 2nd quarter				
2028 - 3rd quarter				
2028 - 4th Quarter				
2028 Total	\$ -	\$ -	\$ -	
2029 - 1st quarter				
2029 - 2nd quarter				
2029 - 3rd quarter				
2029 - 4th Quarter				
2029 Total	\$ -	\$ -	\$ -	
2030 - 1st quarter				
2030 - 2nd quarter	\$ 75,000	\$ 25,000		Trail Maint Fund
2030 - 3rd quarter	\$ 75,000	\$ 25,000		
2030 - 4th Quarter				
2030 Total	\$ 150,000	\$ 50,000	\$ 100,000	
2031 - 1st quarter				
2031 - 2nd quarter				
2031 - 3rd quarter				
2031 - 4th Quarter				
2031 Total	\$ -	\$ -	\$ -	
SUB TOTAL 2027-2031	\$ 150,000	\$ 50,000	\$ 100,000	
Later Years			\$ -	
TOTAL	\$ 150,000	\$ 50,000	\$ 100,000	
Check	\$ -	\$ -	\$ -	
Additional details Other Funding				
Trail maintenance fund.				

5 Project Cost Worksheet (continued)

Departmental cost		DEPARTMENT	DEPARTMENT	ASSET LIFE
	TOTAL			YEARS
Land	\$ -			
Buildings	\$ -			
Infrastructure	\$ -			
Improvements other than Building	\$ 150,000			10
Equipment	\$ -			
Computer Hardware	\$ -			
Computer Software	\$ -			
Consulting	\$ -			
Other	\$ -			
TOTAL	\$ 150,000	\$ -	\$ -	
Check	\$ -			

5 Project Cost Summary

Year	Total Cost	Other Funding	Bonding
Prior Years	\$ -	\$ -	\$ -
2027	\$ -	\$ -	\$ -
2028	\$ -	\$ -	\$ -
2029	\$ -	\$ -	\$ -
2030	\$ 150,000	\$ 50,000	\$ 100,000
2031	\$ -	\$ -	\$ -
SUB Total	\$ 150,000	\$ 50,000	\$ 100,000
Later Years	\$ -	\$ -	\$ -
TOTAL	\$ 150,000	\$ 50,000	\$ 100,000

6 Project Priority	Check all that	Enter minimum amount required in
1 Legally binding contract full sum payment in 1st year?		
2 A statutory or other requirement to spend all of Year 1 money?		
3 Legally binding contract but flexibility in 1st year payments?		\$
4 A statutory or other requirement with flexibility in 1st year payments?		\$
5 Operationally viewed essential-give reason: Maintaining an asset and providing a safe facility.	x	\$ 250,000
6 Other Priority reason: Appearances		
7 Project desirable, either improving service or efficiency:		\$

7 Project Duration Estimates

Project Milestone	Date Estimate
Project Start Date	Summer 2030
Project Bids Solicited	Local Forces
Project Contracts Signed	Local Forces
Project Construction to begin	Summer 2030
Project Construction to end	Fall 2030
Final Payments for Project completion	Winter 2030

8 Project Users	Impacts and Interface
External	Sections of trail will have to be shut down during the work. These inconveniences will be minimal.
Business/Residences on route	A number of businesses are adjacent to the trail, but disturbance should be minimal.
Internal Staff	Department would have to maintain the trail.

Sheboygan County

Capital Project Funding Request

Project Name:	Old Plank Road Trail Maintenance (Greenbush to County Line)
Department:	Planning & Conservation
Project Manager(s):	Aaron Brault
Liaison Committee:	Planning, Resources, Ag & Extension
Project Number:	New Project

1 Project Case

1.1 Project Overview

The Old Plank Road Trail connects East-Central Wisconsin. To the west, 15 miles of paved off-road trail runs the length of eastern Fond du Lac County and connects to a number of routes beyond. East of the County line, approximately 20 miles runs east to the westside of Sheboygan and connects to the Urban Rec Trail for another 3 miles before connecting to the lakefront trail. The trail system is very popular with residents and visitors alike. That said, the 4.6 mile section between Greenbush and the County Line will be in need of preventative maintenance after nearly 16 years. This project would tar cracks and then chip seal/sealcoat and roll this length of the trail.

2 Primary Project Purpose/Objectives

Maintain an existing asset.

3 Project Identification and Alternatives

Extend the life of the pavement by 5-10 years.

4 Project Issues

None anticipated.

5 Project Cost Worksheet

Funding	Expenditure	Other Funding	Bonding	Funding
Prior years	\$ -	\$ -	\$ -	
2027 - 1st quarter				
2027 - 2nd quarter				
2027 - 3rd quarter				
2027 - 4th Quarter				
2027 Total	\$ -	\$ -	\$ -	
2028 - 1st quarter				
2028 - 2nd quarter				
2028 - 3rd quarter				
2028 - 4th Quarter				
2028 Total	\$ -	\$ -	\$ -	
2029 - 1st quarter				
2029 - 2nd quarter				
2029 - 3rd quarter				
2029 - 4th Quarter				
2029 Total	\$ -	\$ -	\$ -	
2030 - 1st quarter				
2030 - 2nd quarter				
2030 - 3rd quarter				
2030 - 4th Quarter				
2030 Total	\$ -	\$ -	\$ -	
2031 - 1st quarter				
2031 - 2nd quarter	\$ 150,000			
2031 - 3rd quarter	\$ 150,000			
2031 - 4th Quarter				
2031 Total	\$ 300,000	\$ -	\$ 300,000	
SUB TOTAL 2027-2031	\$ 300,000	\$ -	\$ 300,000	
Later Years			\$ -	
TOTAL	\$ 300,000	\$ -	\$ 300,000	
Check	\$ -	\$ -	\$ -	
Additional details Other Funding				

5 Project Cost Worksheet (continued)

Departmental cost		DEPARTMENT	DEPARTMENT	ASSET LIFE
	TOTAL			YEARS
Land	\$ -			
Buildings	\$ -			
Infrastructure	\$ -			
Improvements other than Building	\$ 300,000			10
Equipment	\$ -			
Computer Hardware	\$ -			
Computer Software	\$ -			
Consulting	\$ -			
Other	\$ -			
TOTAL	\$ 300,000	\$ -	\$ -	
Check	\$ -			

5 Project Cost Summary

Year	Total Cost	Other Funding	Bonding
Prior Years	\$ -	\$ -	\$ -
2027	\$ -	\$ -	\$ -
2028	\$ -	\$ -	\$ -
2029	\$ -	\$ -	\$ -
2030	\$ -	\$ -	\$ -
2031	\$ 300,000	\$ -	\$ 300,000
SUB Total	\$ 300,000	\$ -	\$ 300,000
Later Years	\$ -	\$ -	\$ -
TOTAL	\$ 300,000	\$ -	\$ 300,000

6 Project Priority	Check all that	Enter minimum amount required in
1 Legally binding contract full sum payment in 1st year?		
2 A statutory or other requirement to spend all of Year 1 money?		
3 Legally binding contract but flexibility in 1st year payments?		\$
4 A statutory or other requirement with flexibility in 1st year payments?		\$
5 Operationally viewed essential-give reason: Maintaining an asset and providing a safe facility.	x	\$ 300,000
6 Other Priority reason: Appearances		
7 Project desirable, either improving service or efficiency:		\$

7 Project Duration Estimates

Project Milestone	Date Estimate
Project Start Date	Summer 2031
Project Bids Solicited	Local Forces
Project Contracts Signed	Local Forces
Project Construction to begin	Summer 2031
Project Construction to end	Fall 2031
Final Payments for Project completion	Winter 2031

8 Project Users	Impacts and Interface
External	Sections of trail will have to be shut down during the work. These inconveniences will be minimal.
Business/Residences on route	N/A
Internal Staff	Department would have to maintain the trail.